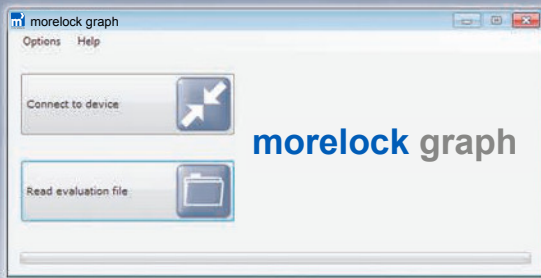


# Programming and data transfer:



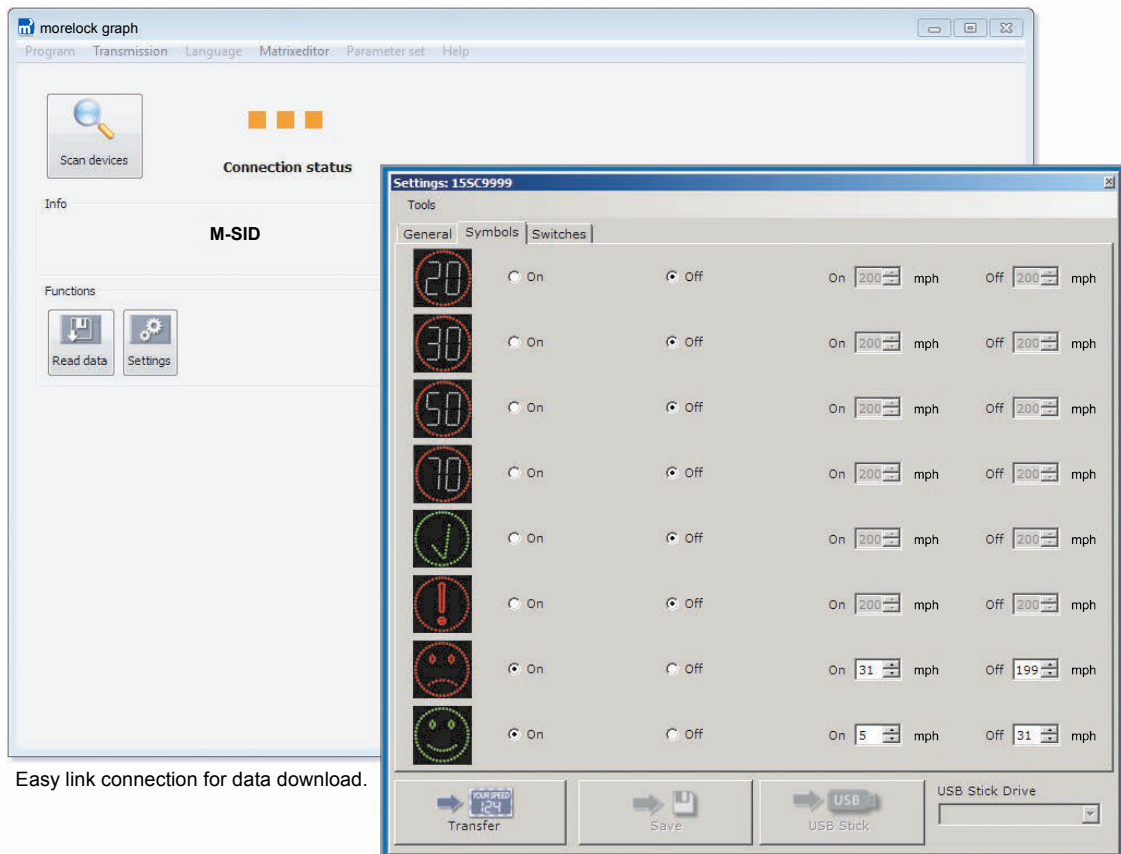
Redesigned and easy to handle user interface.



Our software for data evaluation on CD.

## morelock graph

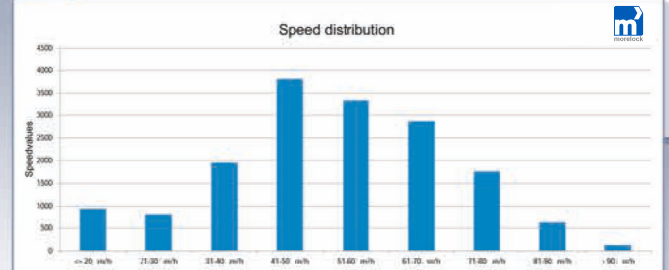
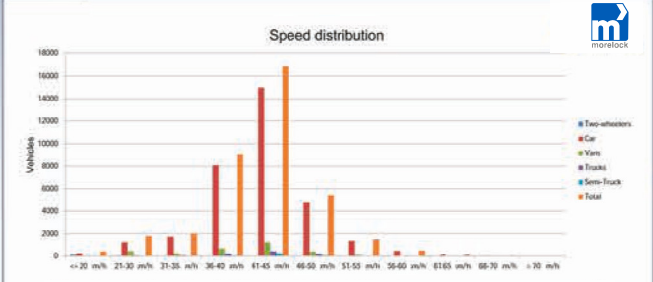
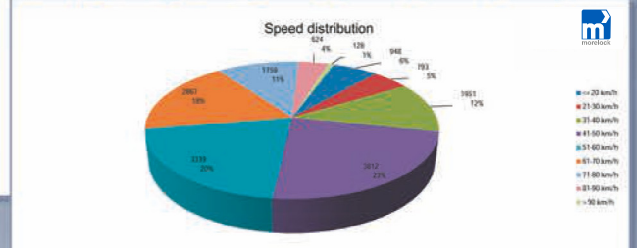
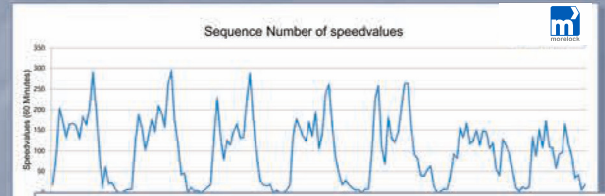
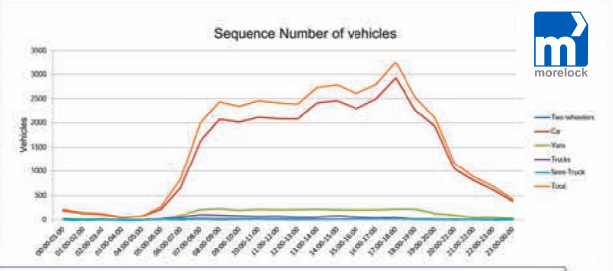
Morelock graph is a Windows® based communication and evaluation software we provide to our customers free of charge for an unlimited number of PCs. In addition to the user friendly programming of our devices morelock graph offers an extensive data evaluation and easy installation. Another benefit are regular free of charge software updates by download.



Easy link connection for data download.

User friendly programming of the LED signs.

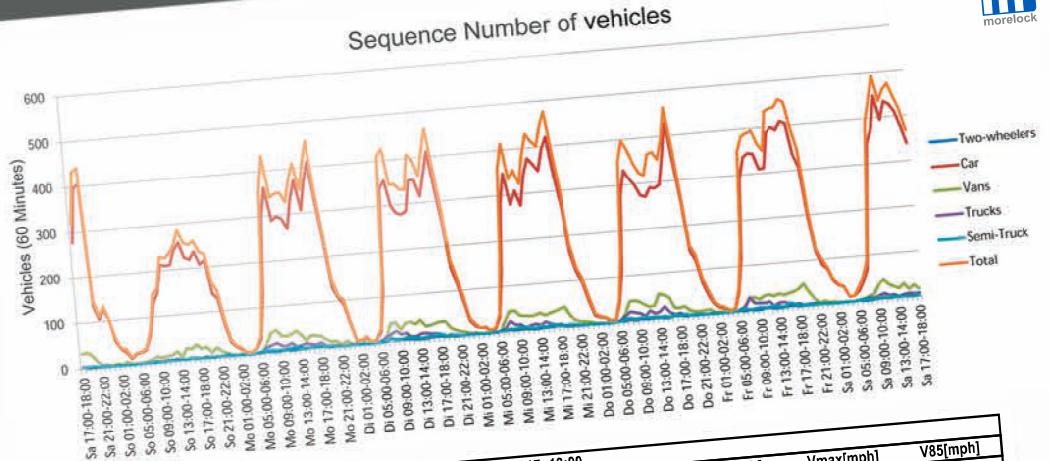
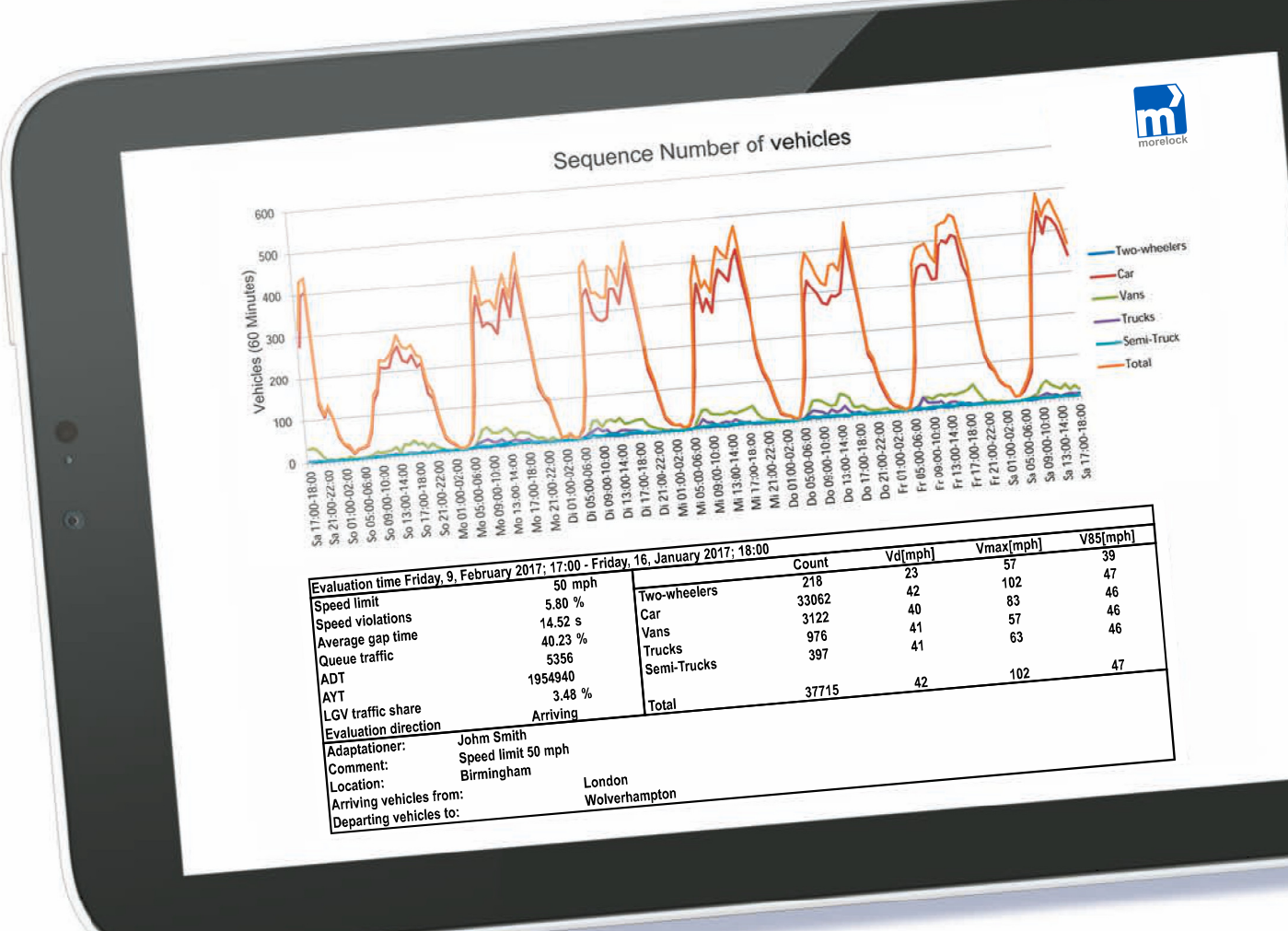
# Data evaluation:



Evaluation time Friday, 9, February 2017; 17:00 - Friday, 16, January 2017; 18:00		Values			
Speed limit	50 mph	Vehicles	Vd[mph]	Vmax[mph]	V85[mph]
Speed violations	5.80 %	16221	7518	75	102
ADT	5356				
AVT	1954940				
Evaluation direction	Arriving				
Adaptationer:	John Smith				
Comment:	Speed limit 50 mph				
Location:	Birmingham				
Arriving vehicles from:	London				
Departing vehicles to:	Wolverhampton				

Sample evaluation of a M-SID speed display.

Sample evaluation of a morelock count traffic counter.



Evaluation time Friday, 9, February 2017; 17:00 - Friday, 16, January 2017; 18:00		Values			
Speed limit	50 mph	Count	Vd[mph]	Vmax[mph]	V85[mph]
Speed violations	5.80 %	16221	7518	75	102
Average gap time	14.52 s				
Queue traffic	40.23 %				
ADT	5356				
AVT	1954940				
LGV traffic share	3.48 %				
Evaluation direction	Arriving				
Adaptationer:	John Smith				
Comment:	Speed limit 50 mph				
Location:	Birmingham				
Arriving vehicles from:	London				
Departing vehicles to:	Wolverhampton				

Excel based evaluation on a tablet.